









2

1.

BYhM57
= PBYh ! P7
BYh = # C = OBYh
= PBYh .\$\$# .\$\$\$AVdg
A BP
P= P CHP AIM
77HS
KYV = bhYfbYh
P7BYh .\$\$# .\$\$\$AVdg E net
B7I EA =

3. I/O



5.

BY h M5 7

- SI5 B Nc P 5 7 I
-
-
-



6.

B 7 I BY h M5 7
 ." 3; En
 EA =
 B 7 I = # C = # C

B 7 I

7.

- B 7 I EA =
- O 2a g
- 7 C5 PH
-
-
- ' /
- = B7 3.' ! ' ! '
-
-
-

8.

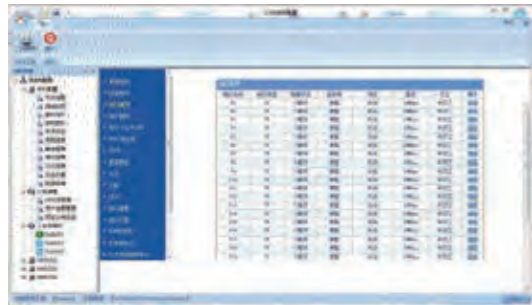
- = b h Y ` ." 3; En /; 6 /; 6 7 C5 PH
- /
- 2 . \$A # . \$A V d g O>12
- = # C 5 /AV d g
- #
- ' /
- 1
- 666
- 2/
- . \$a g r ' \$g
- 2 63 = # C . ž 2' 3 ' ž \$4/
- 3 4' 3 = # C /\$
- 4 IBA
- 5
- /1SA7
- O . \$K
- 6
- ! /\$ r 3\$
- . \$ r 62i
- ! 1\$ r 52
- \$.13a a 2a a .16a a

i



- 7
- 64
- NPP4P1DM174

i



- 38
- HI4
- 84
- D

i



- H6A
- fS
- S7e4
- V

i



- K
- P
- a
- 6"

i



- 01
- 64
- HI4
- 64
- 06
- 06
- 06

i



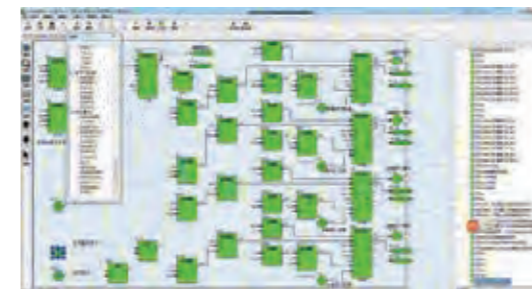
- 07
- 64
- 64

i



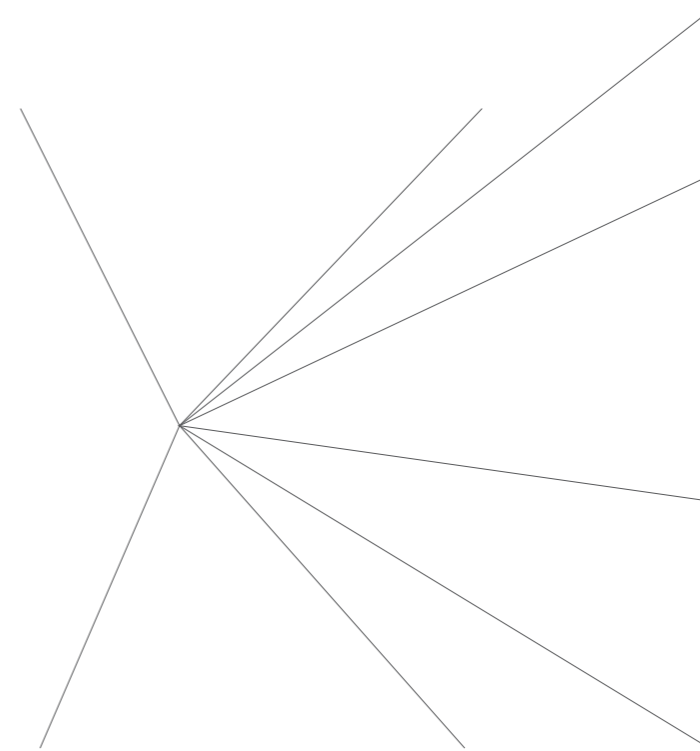
- 7
- 01
- 06
- 06
- 06
- 06

i

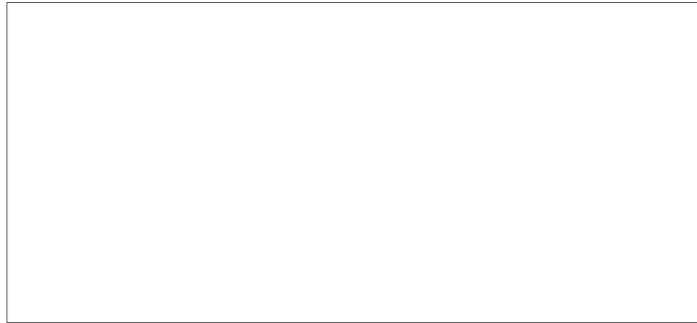


- 01
- 06
- 06
- 06
- 06
- 06

De 7 H 5 9 1 6 7 0
J 2 1 1 A

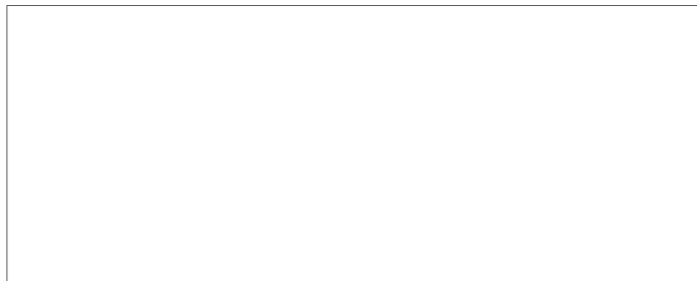


9M0



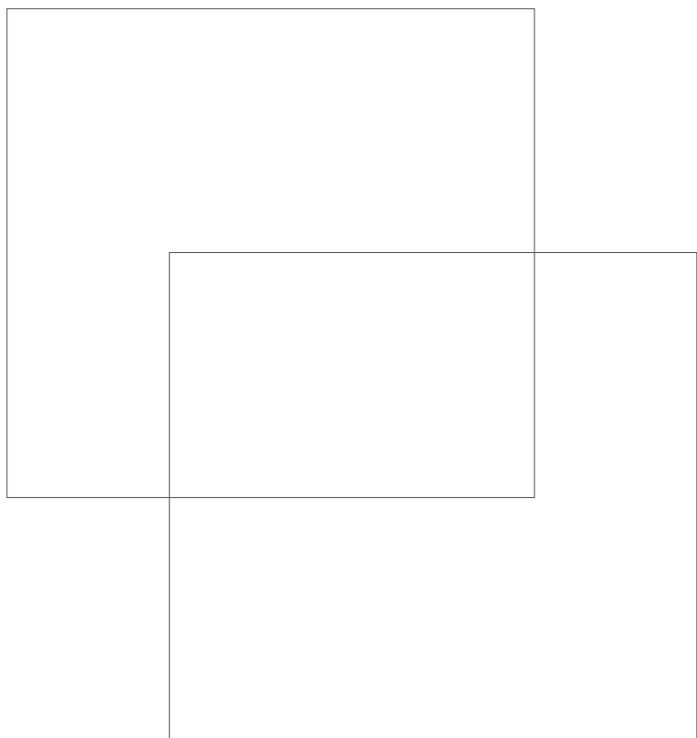
- 48
- 5

d%



- 0
- 1
- 2

u'



- 1
- 2

3. xAMS

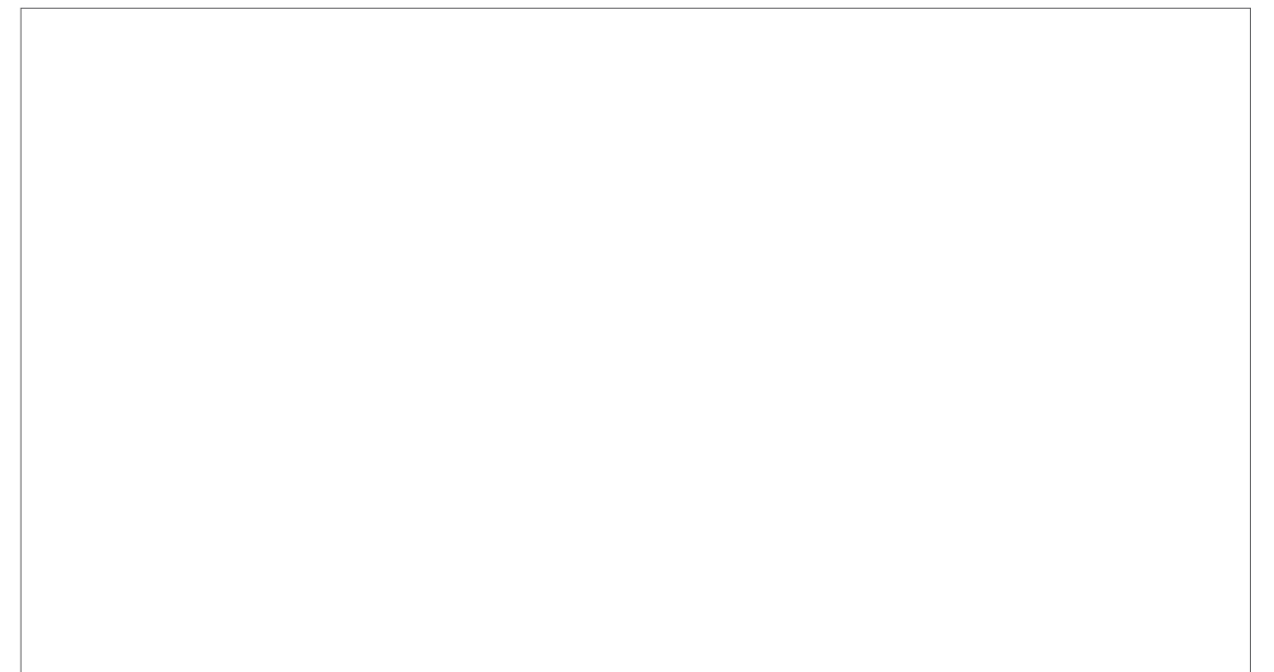
u5 A P

B Y h M5 7

- Mf c Z] V rg ! AM E5 OH CC

BO 1 sy 4 3 A P 2 X

-



A


I/O			
18	720204030000428	NAI-21	ආදායම්
19	720204030000429	NAIH-21	ආදායම්
20	720204030000427	NAO-21	ආදායම්
21	720204030000430	NAOH-21	ආදායම්
22	720204030000443	NDI-21	වැය
23	720204030000425	NDI-23	වැය
24	720204030000452	NSOE-21	වැය
25	720204030000446	NDO-21	වැය
26	720204030000442	NDO-22	වැය
27	720204030000435	NRTD-21	වැය
28	720204030000441	NTC-21	වැය
29	720204030000436	NPI-21	වැය
30	720204030000439	NSV-21	වැය
31	720204030000440	NSVI-21	වැය
32	720204030000438	NSD-21	වැය
33	720204030000437	NLP-21	වැය
34	720204030000449	NDOT-21	වැය, වැය
35	720204040000528	NDOT-22	වැය, වැය
36	720204040000522	NDOT-231	වැය, වැය
37	720204040000521	NDOT-232	වැය, වැය
38	720204040000524	NDIT-21	වැය, වැය
39	720204040000498	NSDT-21	වැය, වැය
40	720204040000493	NLPT-21	වැය, වැය


B I/O



I/O	
	/1SA7 % %
	F1RR50&UW0P&8 0†
= # L	1P D0ESV 88
	%-l 1-l %-a a l l
	7 CO 14C7 7 DU f h % 5 BP= 7 3' " 1! /-% EN 61326-1: 2013, CISPR 16-4-2 CISPR 11: 2009 ,& ,& EN 61010-1:2010 \$,,6\$
	! /- r Ž 3- ! 1- r Ž , 2 %r 62 ž %d 2--En %a # g / /2--a -" 2r] g ž %ž --- # l
	7 B C7 7 D'

NAI-21	8
0A	8
6E	8\$
9h	73h
8	8U†
6A	8VADU
9E	88& 8PP488&
3AR0	888
0	NPP4

NAIH-21	16 Hart
	16
	84V\$7
	73h
	8U†
	8VADU
	888
	NPP4

NAO-21	8
	8
	8\$
	2
	.
	8A\$
9E	88& 8PP488&
0	NPP4

		NSV-21 DEH	NSVI-21 DEH
		% D = A / / / 4 %	
		ISAH ' # 3 5 = . @ 2S# @ /-a 5 O-" % 5 L. 1r /-a 5 # -r 2S @ /-a 5 O-" / A= . fl 1, SA7 Ł AL. ' -SA7 # %	
		IBA	
	IBA		
		%-SA7 %2--SA7	
		O% O/T	1 -T O 1T

		NSD-21 DEH	
		% 3 3 /	
		2 /--a S	fl 1, SA7 Ł
		ž D \c h c ALP	O 2-
		-r %HEn	
		-" %ODA % ž 2 2- ODA	O %a g
		%-SA7 %2--SA7	
		O' Tž	O' T

		NLP-21 ETS	
		/1 3	
		1, SA7	
		3-S# 2-a 5	
		%-SA7 %2--SA7	
		O %ž O-" /T	